

PRODUCT SATISFACTION

REAL-TIME TELEPATHOLOGY IN PRE-CLINICAL STUDIES

RESEARCH TOXICOLOGY CENTRE

Research Toxicology Centre (RTC) is a small, yet highly regarded CRO located just outside of Rome, Italy. A subsidiary of the Menarini Group, RTC conducts non-clinical toxicology studies for drug and medical device companies throughout Europe and Asia.

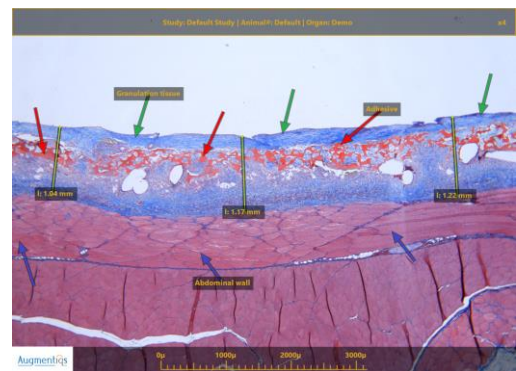
USE OF AUGMENTIQS

RTC installed Augmentiqs on-site in H1 2018 for the purpose of remote consultation with consultant pathologists and sponsors. With pre-purchase expectations among the RTC pathologists consisting of a high-quality and easy to use solution for remote consultations, the pathologists at RTC were not let down, and their clients were highly impressed.

Prior to Augmentiqs, RTC used a multi-headed scope for onsite consultations and a 3rd ocular camera in conjunction with screen-sharing software for collaboration with remote parties. Since installing Augmentiqs, the ease and frequency of both internal and external discussions has increased, with RTC pathologists commonly showing histopathological changes to the sponsor and study director.

MEASURING VALUE

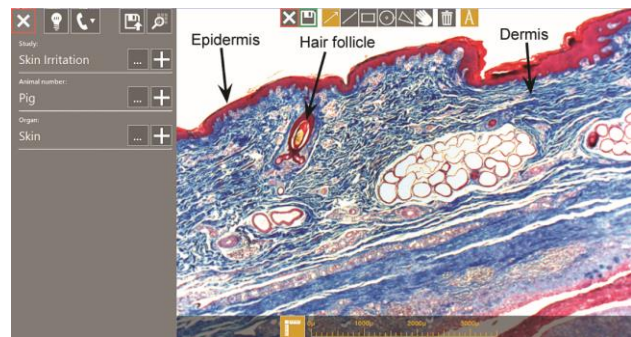
RTC has experienced significant time savings with Augmentiqs, including internal pathology hours and cycle time. As many clients are not pathologists, there is a need for them to see and be guided across the image while hearing the explanation and criteria applied during the evaluation using pathology focused annotation tools and a tailored user interface. Of particular importance, Augmentiqs provides uncompromised image quality even at limited internet connection bandwidths.



Looking to the future, RTC expects the high client satisfaction stemming from the simple and easy connection, and ability to immediately view the histopathological image as a tool for attracting more clients and increase in revenues.

ADVANCING SCIENCE

Pathology is a subjective science with histopathological findings of pre-clinical toxicologic studies being determined almost exclusively by the study pathologist. As the scientific parameters of studies become more objective, the histopathological findings will likely follow this trend and require more objective methodologies.



RTC believes that the ability to open the microscope to the outside world and more easily share and collaborate with multiple experts on the interpretation of histopathological images could play a large role in improving the science of pre-clinical studies.